

MONTHLY MEMBERSHIP PROGRESS REPORT

LOCATION MICHIGAN

District 11 E1

Results as of: 12/31/2022

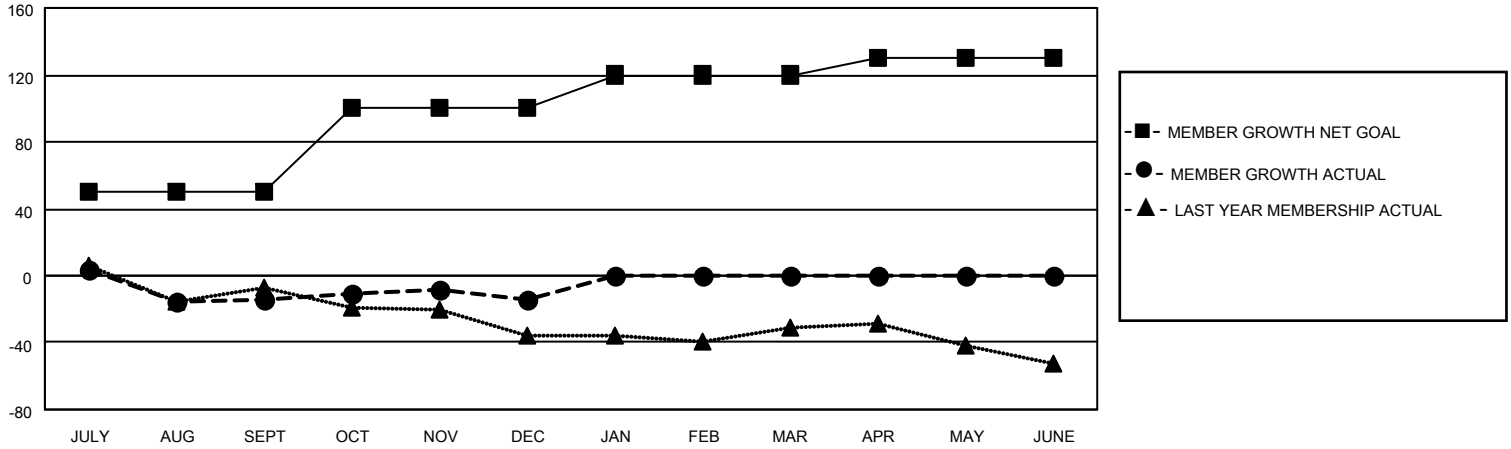
Clubs			
RESULTS FOR 2022-2023			
QUARTER	NEW CLUB GOAL	NEW CLUBS	DROPPED CLUBS
JULY/AUG/SEPT	0	0	0
OCT/NOV/DEC	0	0	0
JAN/FEB/MAR	0	0	0
APR/MAY/JUNE	1	0	0

Members			
RESULTS FOR 2022-2023			
QUARTER	MEMBER GROWTH NET GOAL	MEMBER GROWTH ACTUAL	DROPPED MEMBERS ACTUAL (including transfers)
JULY/AUG/SEPT	50	25	38
OCT/NOV/DEC	50	31	29
JAN/FEB/MAR	20	0	0
APR/MAY/JUNE	10	0	0

GOALS AND ACTUAL NEW CLUBS CUMULATIVE



GOALS AND ACTUAL MEMBERS CUMULATIVE



DROPPED CLUBS: 0

18 CLUBS OF 39 ADDED 1 OR MORE NEW MEMBERS

GENDER DISTRIBUTION

MALE	594 (64.08%)
FEMALE	331 (35.71%)
NON BINARY	0 (0.00%)
PREFER NOT TO ANSWER	2 (0.22%)

DROPPED MEMBERS

[CLICK HERE FOR CUMULATIVE MEMBERSHIP DATA](#)

DECEASED	9
CLUB CANCELLED	0
OTHER	58
TOTAL	67

TOTAL FAMILY UNIT MEMBERS	260
FAMILY MEMBERS PAYING HALF DUES	132